

KEYSTONE HARDSCAPES

HATCH PATTERNS

FOR

AutoCAD 2018

ALSO COMPATIBLE WITH PREVIOUS VERSIONS

Users Manual

KEYSTONE HARDSCAPES HATCH PATTERNS USER'S MANUAL

This manual describes how to install the Keystone Hardscapes Paver Hatch Patterns for AutoCAD version 2018 and AutoCAD LT.

Contents

- I** Introduction
- II** Installation for AutoCAD 2018 and Previous versions Windows x
- III** Using Hatch Patterns
- IV** Installing Hatch Patterns for AutoCAD LT

Introduction

Included with the installation package, you will find files necessary to install KEYSTONE HARDSCAPES PAVER HATCH PATTERNS for AutoCAD V. 2018 and AutoCAD LT in the Windows x operating system.

Although this version of KEYSTONE HARDSCAPES PAVER HATCH PATTERNS is for AutoCAD 2018, it should work with all previous versions of AutoCAD. The only difference is you must determine where the Acad.pat and Acadiso.pat files are stored and read by AutoCAD (See Below for instructions to locate "Support" folder).

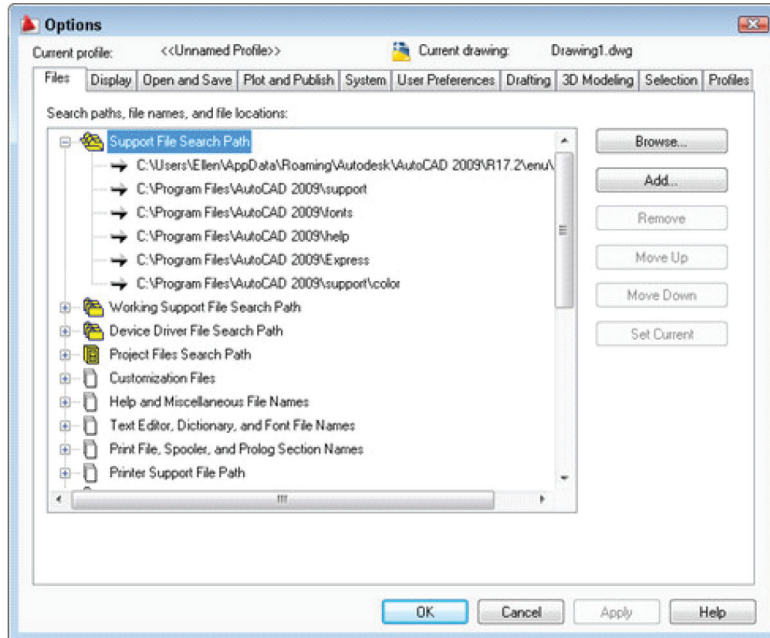
II. Installation for AutoCAD 2018 Windows x.

RENAME YOUR EXISTING ACAD.PAT FILE IN THE SUPPORT DIRECTORY TO ACADORIG.PAT AND YOUR EXISTING ACADISO.PAT FILE TO ACADISOORIG.PAT.

NOTE: IF YOU HAVE NEVER CHANGED YOUR ACAD.PAT FILE AND NEVER INSTALLED A THIRD PARTY PROGRAM WHICH MAY HAVE ADDED ADDITIONAL HATCH PATTERNS TO YOUR ACAD.PAT FILE, YOU MAY SIMPLY COPY THE ACAD.PAT AND ACADISO.PAT FILES FROM THE INSTALLATION PACKAGE TO YOUR AUTOCAD SUPPORT FOLDER. THE LOCATION OF THIS SUPPORT FOLDER VARIES BASED UPON YOUR OPERATING SYSTEM AND VERSION OF AUTOCAD.

To find your support folder path, open the Options dialog box by right-clicking in the drawing or commandline area with no objects selected, and choose Options.

Click the Files tab. Then click the plus sign next to the first item, Support File Search Path, to expand the list.



The top item is your default location. Your menu, font, linetype, and hatch pattern files are there by default.

EXAMPLE 2: AUTOCAD 2018 IN WINDOWS 10

C:\USERS\ (YOU'RE USER NAME) \APPDATA\ROAMING\ AUTODESK\AUTOCAD 2018\R22.0\ENU\SUPPORT

Use the following instructions if you, or a third party program, have added hatch patterns to Acad.pat.

1. Make a copy of Acad.pat and Acadiso.pat or rename Acad.pat to Acadorig.pat and Acadiso.pat to Acadisoorig.pat. These files can be found in the AutoCAD Support Folder. If something goes wrong with this installation you can copy Acad.pat and Acadiso.pat back to this folder and overwrite the acad.pat and acadiso.pat which you changed as part of this installation.
2. There are three files in the Keystone Hardscapes Paver Patterns Package; **keystonehardscapes2018.pat**, **Acad.pat** and **Acadiso.pat**. Copy only keystonehardscapes2018.pat to your AutoCAD support folder.
3. Open keystonehardscapes2018.pat in a text editor (i.e. Notepad). keystonehardscapes2018.pat is a text file which contains the code for Keystone Hardscapes Paver Patterns.
4. Copy the entire text contents of keystonehardscapes2018.pat to the clipboard)
5. Open Acad.pat that is in *Support Folder*.
6. Paste the contents of keystonehardscapes2018.pat into Acad.pat at the bottom of the text file.
7. Save Acad.pat and close the text editor.
8. Open Acadiso.pat which is in the same folder and paste the contents of the keystonehardscapes2018.pat file at the bottom of this file.
9. Save Acadiso.pat and close the text editor.
10. Installation is complete

III. Using Keystone Hardscapes Paver Hatch Patterns

AutoCad

1. Start AutoCAD.
2. Invoke the “Bhatch” or “Hatch” command.
3. The Bhatch dialog box comes up.
4. In the “Pattern” selection box scroll until you see “KEYSTONE HARDSCAPES HATCH”. The Keystone Hardscapes patterns follow and are in small caps. (Standard AutoCAD Patterns are in Large Caps).
5. Refer to the included sample sheets ([in this manual](#)) for pattern name abbreviations which show up in the “Patterns” selection box.
6. The hatch pattern scale factor for architectural units should be 1” and for decimal units .0833.

Note: Some of the Keystone Hardscapes Hatch Patterns are very complex. These patterns will take longer to generate and will greatly increase the size of your drawing file.

NOTE: PATTERN PREVIEW SWATCHES MAY NOT BE AVAILABLE IN THE BHATCH DIALOG BOX DUE TO THE COMPLEX NATURE OF THESE PATTERNS. REFER TO THE INCLUDED PRINT FOR PATTERN SAMPLE SWATCHES

Note: Use a hatch scale factor of 1” for architectural units and .0833 for decimal units.

IV. Installing Keystone Hardscapes Paver Hatch Patterns for AutoCad LT

The instructions above apply to AutoCAD LT with the exception that the hatch pattern file is ac.lt.pat rather than acad.pat and ac.lt.iso.pat rather than acad.iso.pat. Don't forget to rename your original ac.lt.pat file to ac.lt.old.pat and ac.lt.iso.pat to ac.lt.iso.old.pat before copying the Keystone Hardscapes files, acad.pat and acad.iso.pat file to your support folder. Then rename acad.pat to ac.lt.pat and acad.iso.pat to ac.lt.iso.pat. You can also open keystonehardscapes2018.pat in a text editor; copy the entire contents and paste it into your current ac.lt.pat and ac.lt.iso.pat files.